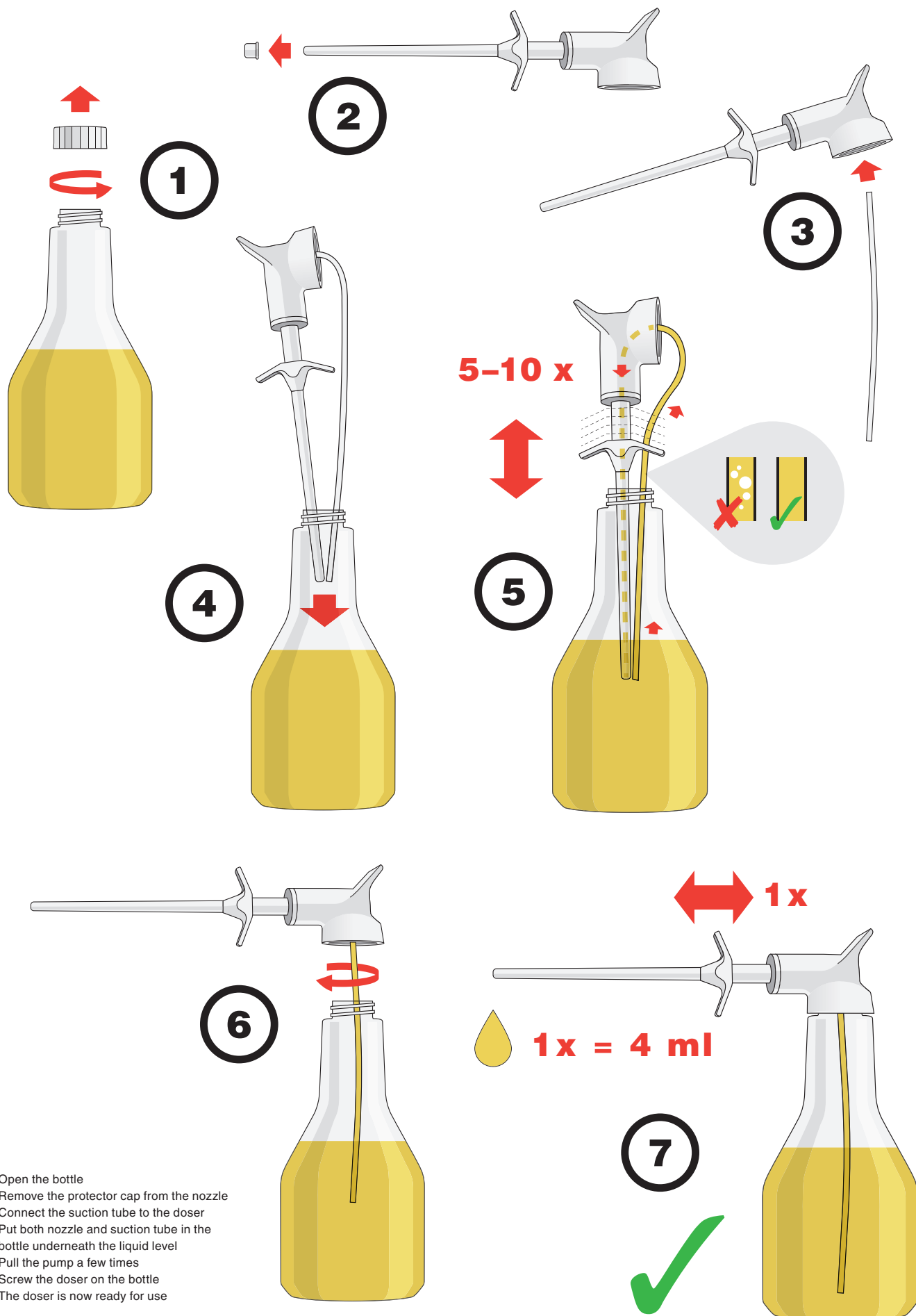
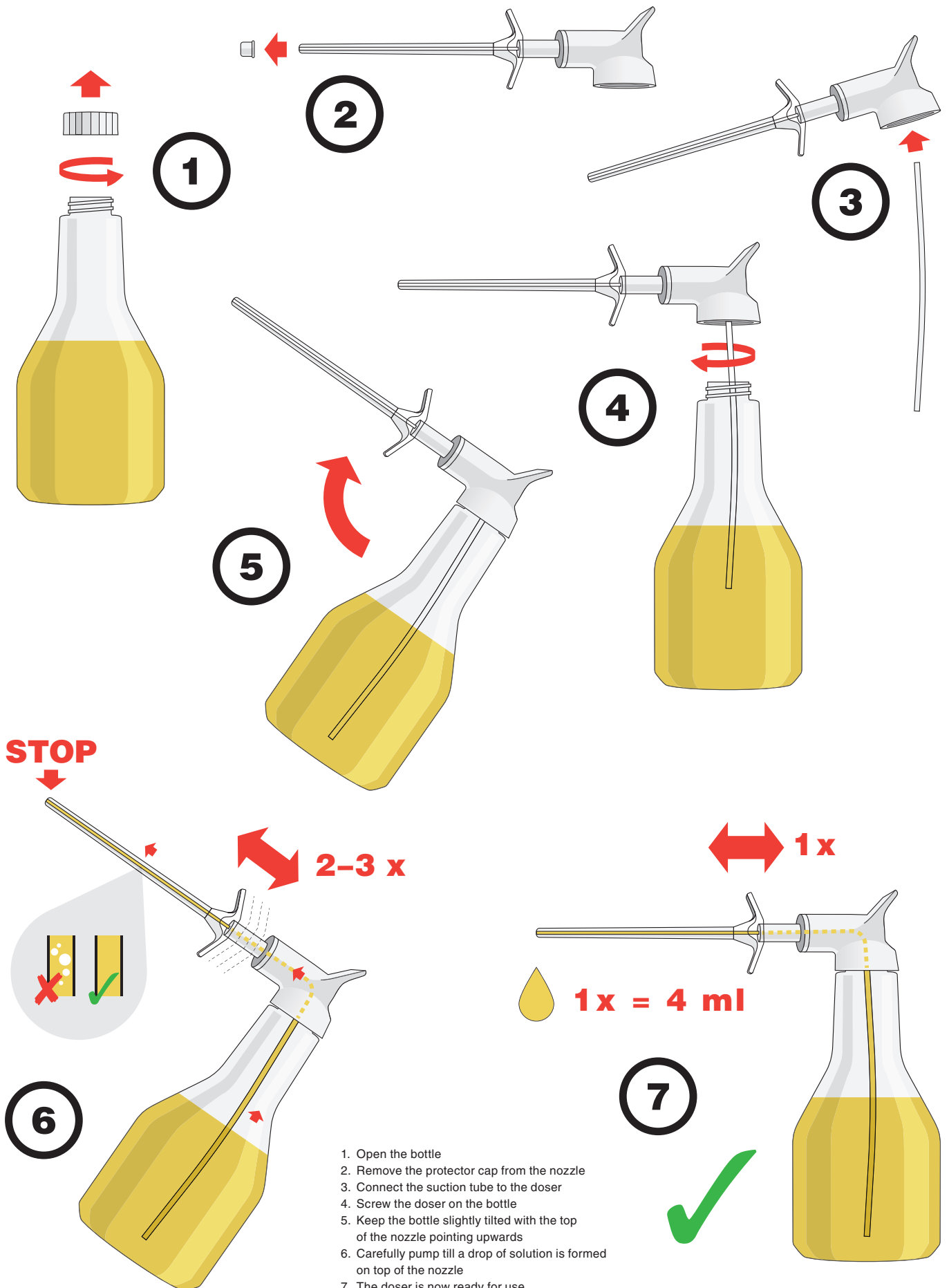


# HOW TO PRIME A 4 ML DOSER



1. Open the bottle
2. Remove the protector cap from the nozzle
3. Connect the suction tube to the doser
4. Put both nozzle and suction tube in the bottle underneath the liquid level
5. Pull the pump a few times
6. Screw the doser on the bottle
7. The doser is now ready for use

# HOW TO PRIME A 4 ML DOSER (TRANSPARENT NOZZLE ONLY)



1. Open the bottle
2. Remove the protector cap from the nozzle
3. Connect the suction tube to the doser
4. Screw the doser on the bottle
5. Keep the bottle slightly tilted with the top of the nozzle pointing upwards
6. Carefully pump till a drop of solution is formed on top of the nozzle
7. The doser is now ready for use